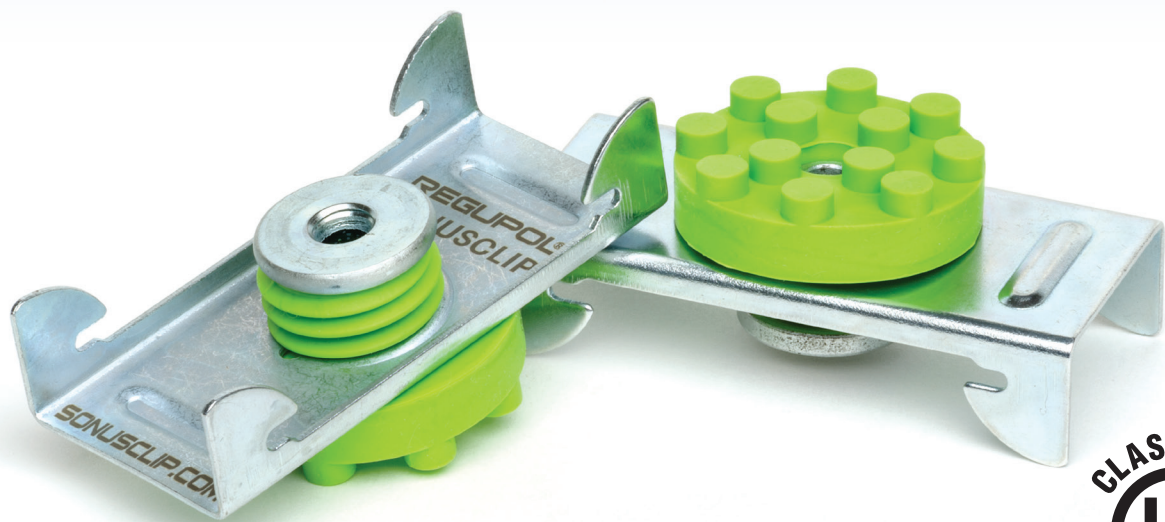


REGUPOL SONUSCLIP INSTALLATION GUIDE FOR WALLS OR CEILINGS WOOD OR STEEL FRAMING

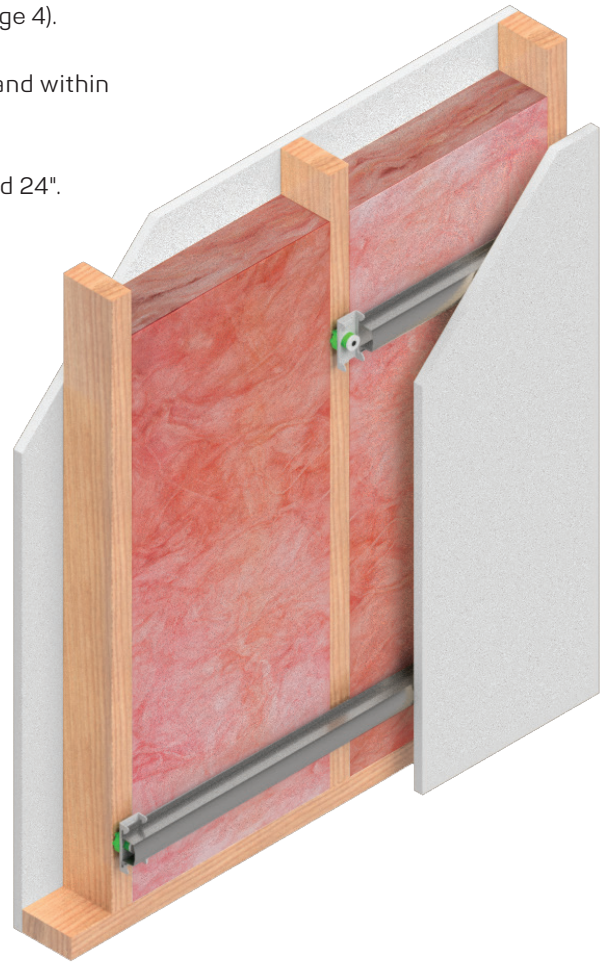


If you have questions
during installation please
contact **REGUPOL** at
717-675-2190

REGUPOL **sonusclip** Sound Isolation Clip

Wall Installation Instructions for one or two layers of 5/8" Gypsum Board

- I** Layout **sonusclip** row spacing based upon framing (ie 16" or 24", see page 4).
- II** Locate the first row of **sonusclip**/channel within 3" to 6" from the floor and within 3" to 6" from the ceiling.
- III** Use a chalk line to layout the remaining rows, making sure to not exceed 24".
- IV** **Sonusclip** shall have a maximum spacing of 48" o.c. (refer to layout drawings on page 4).
- V** Fasten the **sonusclip** to the stud / joist using the approved fasteners.
- VI** Tighten fasteners until they snug up into the metal washer. It is important that the **sonusclip** are not over tightened.
- VII** Install the drywall furring into the **sonusclip**. Start by placing the bottom edge of the channel into the **sonusclip** and squeezing inward to snap the channel into place.
- VIII** Additional **sonusclip** are required on end walls (see drawings page 4).
- IX** If joining 2 pieces of furring channel, make sure they're in the middle of the stud cavity and overlap by 6". Use wire tie (18ga wire) or 2ea 7/16" steel framing screws.
- X** Before installation of gypsum wall board install 1/4" to 3/8" shims to hold the gypsum board off the floor. There be at least a 1/4" gap around the perimeter where the wall meets the ceiling.
- XI** Secure the drywall to the furring channel using 1 5/8" drywall screws. Make sure the gypsum board is screwed to each furring channel before removing the shims.
- XII** If installing additional layers of gypsum board, repeat steps X – XII
Note: offset the seams / joints between layers of gypsum board for increased acoustical performance.
- XIII** Caulk around all perimeter edges using a smoke-sound sealant.
- XIV** After caulking has set , tape and mud as usual.



General information

- Minimum allowable thickness for steel studs is 20 gauge (0.030-0.037") (0.8-0.9mm)
- Furring channel must be fully supported, do not cantilever the channel more than 6" away from **sonusclip**
- Drywall Furring Channel must be 25 gauge and hemmed
- **Sonusclips** are not designed to carry heavy wall mounted weights such as cabinets or bookshelves

Ceiling Installation Instructions for one or two layers of 5/8" Gypsum Board

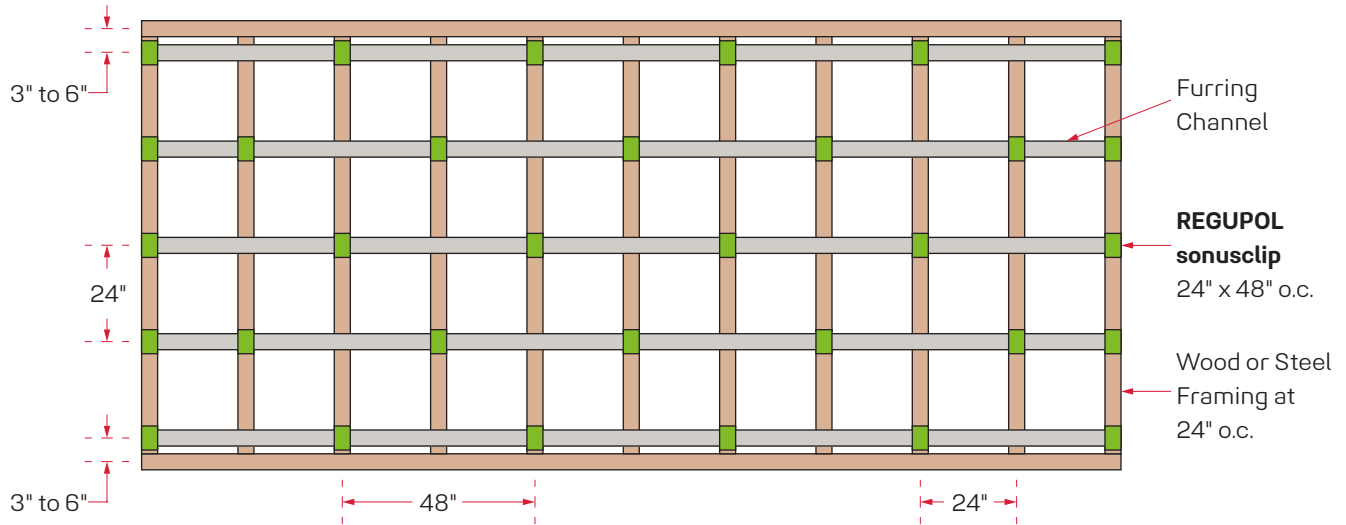


- I Layout **sonusclip** row spacing based upon framing (ie 16" or 24", see page 4).
- II Locate the first row of **sonusclip**/channel within 6" of wall.
- III Use a chalk line to layout the remaining rows, making sure to not exceed 24".
- IV **Sonusclip** shall have a maximum of 48" o.c. (refer to layout drawings on page 4).
- V Fasten the **sonusclip** to the joist using the approved fasteners (3" screws are recommended).
- VI Tighten fasteners until they snug up into the metal washer. **Sonusclip** must not be overtightened.
- VII Install the drywall furring into the **sonusclip**. Start by placing the bottom edge of the channel into the **sonusclip** and squeezing inward to snap the channel into place.
- VIII Furring channel must be fully supported — additional clips may be required at end walls. Additional clips & channel will be required around HVAC openings.
- IX If joining 2 pieces of furring channel, make sure they're in the middle of the cavity and overlap by 6". Use wire tie (18ga wire) or 2ea 7/16" steel framing screws.
- X Gypsum board must have a 1/4" gap around the perimeter edges where ceiling meets the walls.
- XI If installing acoustic batt insulation, check the UL design as it may require closer furring channel spacing.
- XII Secure the drywall to the furring channel using 1 5/8" drywall screws. Make sure the gypsum board is completely screwed to each furring channel.
- XIII If installing additional layers of gypsum board, repeat steps X - XII. Note: offset the seams / joints between layers of gypsum board to improve acoustical performance.
- XIV Caulk around all perimeter edges using a smoke-sound sealant.
- XV After caulking has set, tape and mud as usual.

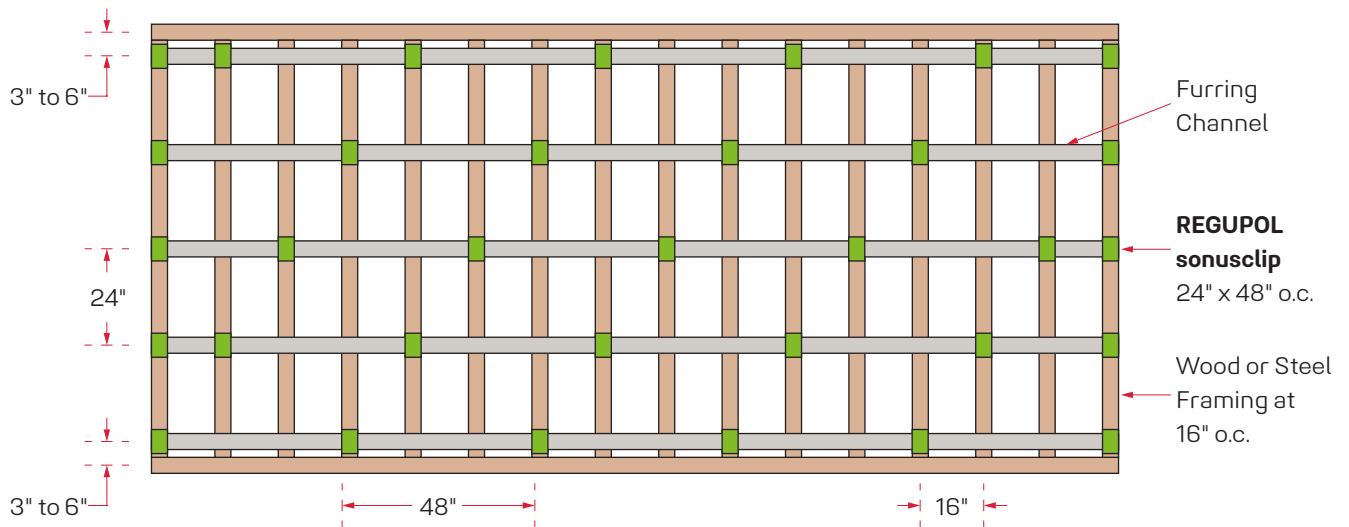
WALL & CEILING LAYOUT GUIDE

WOOD OR STEEL FRAMING

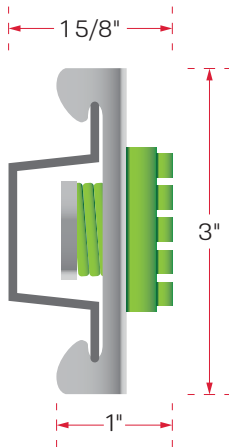
Framing 24" o.c. – sonusclip at 24" x 48" o.c. 1 or 2 layers of 5/8" Gypsum Board



Framing 16" o.c. – sonusclip at 24" x 48" o.c. 1 or 2 layers of 5/8" Gypsum Board



SONUSCLIP & FURRING CHANNEL



Sonusclip Sound Isolation Clip

- Maximum Spacing: 48" o.c.
- Maximum Design Load: 36 lbs (16 kg)

Sonusclip Dimensions:

- 3" tall (76mm)
- 1 1/4" wide (32mm)
- **Sonusclip** with drywall furring channel 1 5/8" deep (41mm)

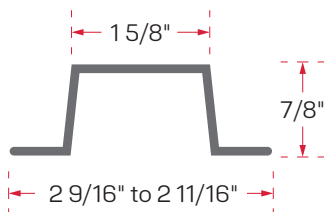


Drywall Furring Channel

- Minimum requirement: 25 gauge hemmed edge detail required on all 25 gauge furring channel

Note: Drywall Furring Channel must be 25 gauge and hemmed

- Depth: 7/8" (22mm)
- Bottom Width: 2 9/16" to 2 11/16" nominal. (65mm to 68mm)
- Width Top: 1 1/4" (31mm)



Note: Splice drywall furring channel with 6" overlap in mid span between two **Sonusclips**. Secure with 18 gauge wire or two 7/16" framing screws



2 1/2" coarse thread screw

Fasteners of Sonusclip to framing

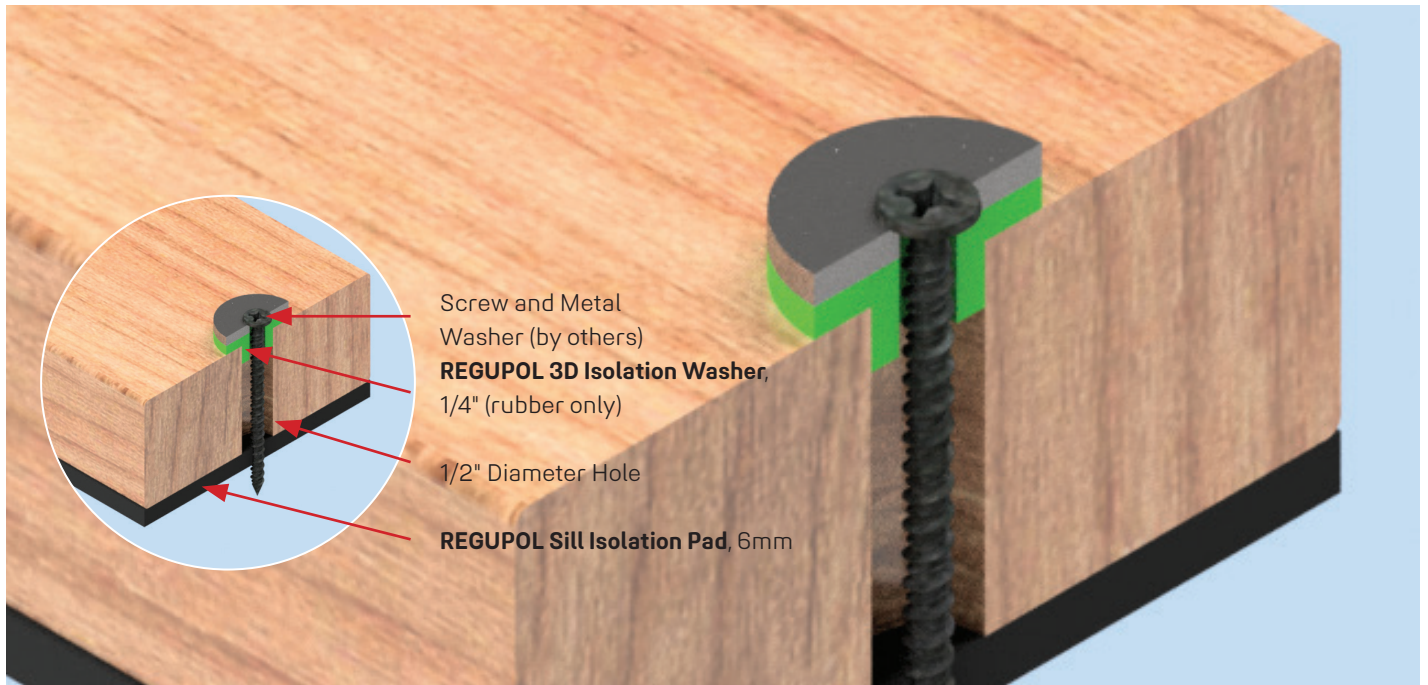
- Wood framing #8 x 2 1/2" coarse thread screw
*for ceilings installation use 3" long screws
- Minimum pull out and sheer of 120 lbs
- Steel framing # 8, #10, #12 x 1 5/8" self tapping fine thread screw.
- Tighten fasteners until they snug up into the metal washer



1 5/8" fine thread screw

Note: **Sonusclips** should not be overtightened.

Product Accessories

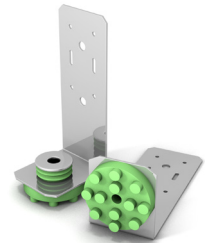


3D Isolation Washer

Sill Isolation Pad

REGUPOL sonus

sonusclip DE90



REGUPOL sonusclip

